



SD **DISMANTLE**
DESTROY
DISASSEMBLE

CAR DISMANTLER



Mantovanibenne®



Mantovanibenne®

www.mantovanibenne.com



Mantovanibenne s.r.l. - Mirandola (Mo) Italy - Tel. +39 0535 615811 - Fax +39 0535 615830
sales@mantovanibenne.com

SD DISMANTLE DESTROY DISASSEMBLE

The Car Dismantler from SD line is a special equipment dedicated to vehicle dismantling: its particular shape allows fast and accurate removal of engines, axles or any valuable component from the body, that will be later demolished and compacted. The SD shear is a key tool for car dismantlers, recycling and scrapping professionals.

Hydraulic Rotation

The sturdy rotation allows accurate positioning of the attachment in any working application and in complete safety.

Precision

SD long and thin jaws are designed for precision jobs, such as extracting engines or any smaller reusable components from the vehicle.



Tough and compact structure

The SD model is built with high wear resistant materials with a hardness of HB 400. The profile of the mouth is reinforced to improve the wear resistance and make the equipment even more compact.

Blades

The Shear Dismantler is equipped with blades to cut the smaller parts like wires, vehicle doors, hoods, etc.

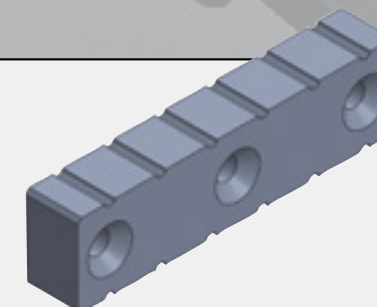
MODEL
SD20



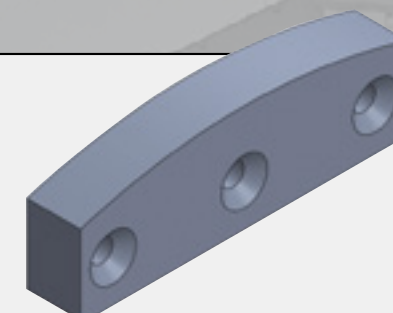
MODEL
SD12



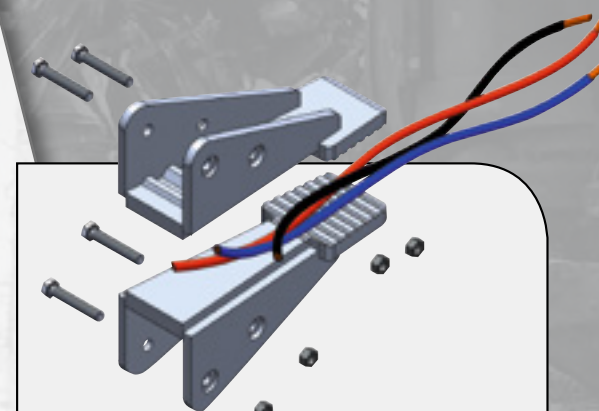
OPTIONAL



STANDARD BLADE



WIRE-CUTTING BLADE



WIRE PADS

TECHNICAL DATA			
MODEL		SD12	SD20
Excavator Weight	t	10-18	18-26
Tool Weight*	kg	950	1760
Length L	mm	2010	2393
Opening A	mm	700	790
Working pressure	bar	200-250	300-350
Oil flow	l/min	60-100	180-200

*Tool weight does include Mantovanibenne top bracket.

