



**Bandit**  
INDUSTRIES, INC.

**HAND-FED CHIPPERS:**  
DISC-STYLE & DRUM-STYLE CHIPPERS



# BANDIT'S COMMITMENT TO CUSTOMER SATISFACTION

BANDIT INDUSTRIES IS PROUD TO BE A LEADER IN OUR INDUSTRY when it comes to safety in the wood and waste processing industries, whether it be through educational seminars conducted at authorized Bandit dealerships, or through the continual research and development of equipment and features. Bandit is an industry leader in safety, and consistently exceeds ANSI and OSHA safety requirements and recommended practices.

Regardless of the time and effort invested by manufacturers to minimize risks, accidents can still happen. In nearly all cases, such accidents are due to operator error. Even the most established professionals who are accustomed to the equipment can make a mistake if they take safety precautions for granted. Your safety, and the safety of those working with you, depends on your knowledge of how to properly operate and maintain your equipment. Never take the equipment or safety procedures for granted.

**THESE ARE SOME OF THE SPECIAL FEATURES AVAILABLE ON NEW BANDIT HAND-FED CHIPPERS. ALL FEATURES CAN ALSO BE RETROFITTED TO OLDER BANDIT HAND-FED CHIPPERS.**

## PUSHER PADDLE (STANDARD)

Designed to assist operators in feeding smaller material into the chipper, the wooden pusher paddle allows operators to push material from the infeed tray into the feed wheels without reaching in past the infeed hopper. It can be chipped without causing damage to the chipper. Under no circumstances should operators reach beyond the leading edge of the infeed hopper to push material to the feed wheels – if your pusher paddle is missing or damaged, replacements are available through Bandit Industries.



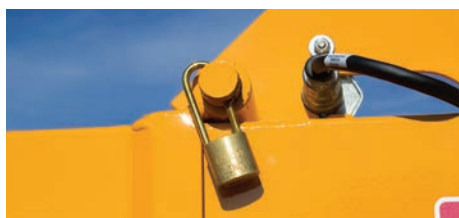
## SAFETY DECALS (STANDARD)

There are numerous decals located on the machine that contain important information to assist in operating your equipment safely. It is necessary for all machine owners, operators and service people to be familiar with, and follow all instructions as listed on the decals. Replacement and multilingual decals are available through Bandit Industries.



## FOLDING INFEED TRAY (STANDARD)

Brush Bandit chippers feature standard folding infeed trays to assist with transportation. Non-folding, heavy-duty welded infeed trays are optional. If equipped with the folding infeed tray, it must be locked in the open position whenever the chipper is in use, and folded closed for transport. These devices must be in proper operation working condition at all times.



## LOCK PINS (STANDARD)

All Brush Bandit hand-fed chippers are equipped with a chipper hood lock pin, designed with a keyed padlock to secure the chipper hoods and doors in the closed position. Never use a homemade or make-shift hood pin.



## OPERATOR SAFETY CONTROL BAR (STANDARD)

The control bar wraps around three sides of the infeed chute and controls feed wheel direction.



## GUARDS (STANDARD)

These cover the hydraulic pump belt drive, chipper drive belts, feed wheel drive couplers and bearing retainer.



## ENGINE DISABLE PLUG (STANDARD)

The housings for the chipping discs and drums are equipped with an engine-disable plug attached to the hood locking pin. This safety device helps ensure the hood lock pin is properly installed, or the engine will not operate.





## HOOD SPRING LOCK PIN (STANDARD)

On disc-style chippers, Bandit also installs a patented safety feature called the “Hood Spring-Lock Pin”. This item is positioned so that it stops the retracting movement of the hood lock pin if the chipper disc is still turning. The hood cannot be opened while the disc is spinning.



## LAST CHANCE CABLES (STANDARD)

Bandit’s patented last chance cables are located inside the infeed hopper. If the cables are pulled, the feed wheels will reverse direction or stop. Should a negligent operator fail to follow safety procedures and wind up in the infeed hopper being pulled towards the feed wheels, pulling these cables may be their “Last Chance” to avoid serious injury or death. The “Last Chance Cables” are NOT intended for use during normal, proper operation. Never reach into the infeed hopper to pull these cables – they are for emergency use only.



## LINE/ROPE SHEAR BAR (STANDARD)

The line/rope shearing bar (highlighted in red) is installed in the drum housing on Bandit drum-style hand-fed chippers and acts as a secondary knife. It’s designed to improve the chance of severing a rope or line, should it be drawn into the chipper knives. This patent-pending device is standard on all current Bandit hand-fed drum-style chippers.

## BANDIT BUILDS YOUR BOTTOM LINE.

CALL BANDIT INDUSTRIES AT (800) 952-0178,  
OR CONTACT YOUR BANDIT REPRESENTATIVE TO FIND OUT HOW.



# DURABILITY, PERFORMANCE & PRIDE: THE BANDIT LEGACY

**“We build them big, and we build them strong. And we take care of our customers when they need it.”**

– Bandit Industries founder Mike Morey Sr.

This quote simply and effectively summarizes why Bandit hand-fed chippers are well-known and respected throughout the world. They’re the best performing chippers on the market, designed to meet the demands of hard-working professionals year after year. Every Bandit hand-fed chipper is built by specialized teams using the highest quality components with solid welded construction. No corners are cut; no compromises are made. And when customers have feedback on chipper designs and features, Bandit listens. They’re simply built to be the best.

That’s why it’s no surprise to see Bandit hand-fed chippers still serving front-line duty for ten or even thirty years, racking up thousands of hours of use. That’s why Bandit hand-fed chippers have the best resale value of any chipper on the market. That’s why tens of thousands of tree service professionals rely on their Bandit chippers every day to get the job done quicker with minimal downtime for maintenance. It’s why Bandit equipment owners take such pride in their machines. And it’s why Bandit hand-fed chippers lead the industry for durability, performance, customer satisfaction, and brand loyalty.

### THE BANDIT BACKBONE™ PRODUCT SUPPORT DEPARTMENT: 888-847-7807

The Bandit Backbone is Bandit’s commitment to customer service and support. It’s always been a cornerstone of Bandit’s philosophy, and today that backbone is stronger than ever. If you own a Bandit hand-fed chipper – regardless the age, hours, or warranty status – the Bandit Backbone is here to support you.

### FREE TECHNICAL SUPPORT

When you call the product support department, you’ll be connected to a team of Bandit veterans with decades of experience. These specialists can provide guidance on everything from machine functions to maintenance procedures, electrical systems, and much more. This service is available to anyone, and it’s free of charge.

### PARTS AND SERVICE WHEN YOU NEED THEM MOST

The Bandit Backbone includes factory parts support and both parts and service support from over 200 Bandit authorized dealers worldwide. When problems arise, Bandit is committed to getting you back up and running with minimal downtime.

### FIVE-YEAR GUTS WARRANTY

Any manufacturer can say they have the toughest equipment, but Bandit backs it up with a five-year GUTS warranty on every new Bandit hand-fed chipper. The warranty covers the Bandit-fabricated components of the disc/drum assembly and the slide box feed system to give you years of worry-free operation.



# DISC-STYLE HAND-FED CHIPPERS

IT ALL BEGAN WITH A BANDIT DISC-STYLE CHIPPER IN 1983.

Designs have been continually updated, new models developed, but they all possess the same Bandit DNA of durability, dependability and production.



- **Large Infeed Openings**

Chipper infeed hoppers allow forked material to enter the chipper, reducing the need to trim material prior to chipping.

- **Sloping Infeed Hopper**

All Bandit chippers feature sloping infeed hoppers for easier feeding.

- **High-Velocity Chip Discharge**

Cupped fan blades catch material coming through the disc housing, throwing it at tremendous velocity to ensure chip boxes are filled to capacity.

- **Horsepower Options**

Bandit hand-fed chippers offer a wide range of gasoline and diesel engine options to accommodate the specific needs of every operation.

- **Powerful Feed System**

Bandit feed systems are available with dual wheels driven by strong hydraulic motors for exceptional pulling and crushing power.







Model 250XP

## KEY FEATURES:



### Durable Construction

- Heavy-duty shafts and flange mounted bearing for chipper discs
- Thick, resilient chipping discs
- Highest quality components
- Assembled by specialized teams utilizing welded construction
- Standard 5-year GUTS warranty



### Standard & Custom Paint Colors Available

- Choose from several standard colors at no additional charge. A full spectrum of custom colors are available to match your chipper to the rest of your fleet.



### Powerful Slide Box Feed System

- Proven system that provides direct down pressure to material entering the chipper
- Delivers exceptional pulling, crushing and compressing power
- Patented easy-climb spring tensioning system provides constant down pressure to top feed wheel
- Coupled close to the chipper knives for virtually no hang-up of material between the feed wheels and chipping surface
- Synchronized to Engine RPM so material is never forced against or kept away from the disc
- Creates high-quality, uniform chips



### Efficiency and Productivity

- Medium and large capacity chippers cut at an approximate 45-degree angle for smoother chipping with the grain
- The Model 65XP and 75XP cut at a 90-degree angle to better process small limbs and fibrous material
- Smooth transitions and discharge chutes for exceptional chip throwing
- Large infeed openings
- Wide range of gas or diesel engines
- Available with numerous options to fit specific needs



# DISC-STYLE HAND-FED CHIPPERS



## WHY OWN A BANDIT DISC-STYLE CHIPPER?

Bandit hand-fed chippers have been the chippers of choice for tree service professionals since 1983. In that time, more than 50,000 Bandit machines have entered service in 56 countries thanks to the unbeatable combination of rugged construction, innovative designs, valuable features, high performance, and exceptional resale value. Three decades of evolution have culminated in the current line of Bandit disc-style chippers; they continue to set the bar for chipping excellence.

### Characteristics of Bandit disc-style chippers:

- Smoother chipping action
- Less machine vibration
- Greater efficiency
- Requires less power to process larger material
- 6" - 18" capacity units available

## 6" - 7" Diameter Capacity Disc-Style Hand-Fed Chippers



**MODEL 65XP**

<b>Capacity:</b>	6" Diameter	<b>Length:</b>	10' 2"
<b>Throat Opening:</b>	6" h x 12" w	<b>Width:</b>	5' 7"
<b>Engine Options:</b>	25 - 49.6 HP	<b>Height:</b>	7' 6"
		<b>Weight:</b>	2,000 (Gas) 3,000 (Diesel)



**MODEL 75XP**

<b>Capacity:</b>	7" Diameter	<b>Length:</b>	9' 6"
<b>Throat Opening:</b>	7" h x 12" w	<b>Width:</b>	5' 7"
<b>Engine Options:</b>	25 - 49.6 HP	<b>Height:</b>	7' 6"
		<b>Weight:</b>	2,000 (Gas) 3,000 (Diesel)





## 9" - 18" Diameter Capacity Disc-Style Hand-Fed Chippers



### MODEL 90XP

**Capacity:** 9" Diameter  
**Throat Opening:** 9-½" h x 17" w  
**Engine Options:** 37 - 89 HP

**Length:** 13' 10"  
**Width:** 6'  
**Height:** 8'  
**Weight:** 4,800 lbs.



### MODEL 200UC

**Capacity:** 12" Diameter  
**Throat Opening:** 14" h x 17" w  
**Engine Options:** 67 - 89 HP

**Length:** 14'  
**Width:** 6'  
**Height:** 8'  
**Weight:** 4,500 lbs.



### MODEL 200XP

**Capacity:** 12" Diameter  
**Throat Opening:** 14" h x 17" w  
**Engine Options:** 67 - 130 HP

**Length:** 14' 4"  
**Width:** 6'  
**Height:** 8' 4"  
**Weight:** 5,800 lbs.



### MODEL 250XP

**Capacity:** 12" Diameter  
**Throat Opening:** 12-½" h x 19" w  
**Engine Options:** 122.5 - 147 HP

**Length:** 15'  
**Width:** 6' 11"  
**Height:** 8' 6"  
**Weight:** 6,800 lbs.



### MODEL 255XP

**Capacity:** 15" Diameter  
**Throat Opening:** 15-½" h x 25" w  
**Engine Options:** 122.5 - 174 HP

**Length:** 15'  
**Width:** 7' 1"  
**Height:** 8' 6"  
**Weight:** 8,200 lbs.



### MODEL 280XP

**Capacity:** 18" Diameter  
**Throat Opening:** 18" h x 20-½" w  
**Engine Options:** 147 - 225 HP

**Length:** 16' 2"  
**Width:** 7' 4"  
**Height:** 9' 6"  
**Weight:** 10,500 lbs.



# DRUM-STYLE HAND-FED CHIPPERS THE INTIMIDATOR™ LINE

BANDIT'S COMPREHENSIVE LINE OF DRUM-STYLE CHIPPERS lead the industry when it comes to power, efficiency, durability and production. These machines feature larger diameter chipping drums compared to rival chippers, allowing them to chip smoother and faster while using less fuel.

## – Large Infeed Openings

Chipper infeed hoppers allow forked material to enter the chipper, reducing the need to trim material prior to chipping.

## – Superior Drum Design

Large diameter drums with four knife pockets (2 cuts per revolution) chip most of the material with the grain of the wood for smoother, more efficient operation. Extensive internal baffling makes Bandit drums virtually indestructible.

## – High-Velocity Chip Discharge

Swivel/height adjustable discharge chutes are designed for maximum chip throwing performance. Combined with deep knife pockets and the patented Power Slot, no other drum-style chipper can throw chips like a Bandit.

## – Horsepower Options

Bandit hand-fed chippers offer a wide range of gasoline and diesel engine options to accommodate the power needs for all applications.

## – Powerful Feed System

Bandit feed systems are available with dual wheels driven by strong hydraulic motors for exceptional pulling and crushing power.



## Customizable To Suit Any Operation

- Available with a range of high-power gas or diesel engines
- Choose from a wide range of available options
- Custom builds available upon request

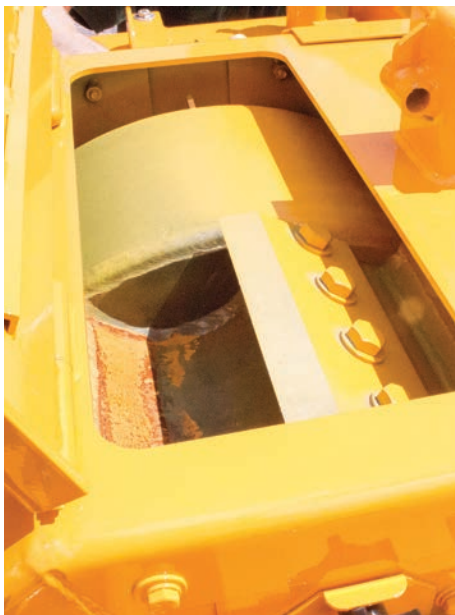


## Standard & Custom Paint Colors Available

- Choose from several standard colors at no additional charge. A full spectrum of custom colors are available to match your chipper to the rest of your fleet.



## KEY FEATURES:



### Legendary Bandit Chipping Drum

- Large 37" diameter drums (24" for Intimidator 12XP) turn slower, utilizing more torque to process material quicker with less horsepower
- Four chipping knives (2 cuts per revolution) with deep pockets add production, increase chip quality, lowers knife and overall maintenance costs, lowers fuel consumption, while providing exceptional throwing power
- Thick drum skin with extensive internal baffling make these drums virtually indestructible
- Chips most of the material with the grain of the wood, significantly reducing machine vibration and lowers fuel consumption
- Large diameter drum shafts that are double the size of many competitive chippers



### Powerful Slide Box Feed System

- Proven system that provides direct down pressure to material entering the chipper
- Delivers exceptional pulling, crushing and compressing power
- Patented easy-climb spring tensioning system provides additional down pressure to top feed wheel, while making it easy to feed larger material into the chipper
- Coupled close to the chipper knives for virtually no hang-up of material between the feed wheels and chipping surface
- Synchronized to Engine RPM so material is never forced against or kept away from the drum
- Creates high-quality, uniform chips



### Exceptional Performance and Durability

- Patented Power Slot in drum housing generates better airflow through the chipper, promoting better chip throwing power while helping to prevent plugging
- Swiveling discharge chutes are height adjustable, with smooth transitions and powerful throwing system which combine to fill chip vans to max capacity
- Large chipper throat openings accommodate large, limby material with minimal trimming required
- Assembled by specialized teams utilizing welded construction
- Standard 5-year GUTS warranty





# DRUM-STYLE HAND-FED CHIPPERS THE INTIMIDATOR™ LINE



## WHY OWN A BANDIT DRUM-STYLE CHIPPER?

Bandit hand-fed drum-style chippers are the go-to machines for tree services, municipalities and arborists. They are built tough and can handle large forked branches and limby trees with ease. Bandit's oversized, reinforced chipping drums are virtually indestructible, and smoother chipping action means less machine wear-and-tear. Bandit drum-style chippers work harder and longer than rival chippers; building the bottom line for companies all around the world.

### Characteristics of Bandit drum-style chippers:

- Larger diameter drums operating at a slower RPM generate more torque
- Better at processing large limby material
- Extremely durable
- Drums chip more of the material with the grain for better chip quality and lower fuel consumption
- 12" - 21" capacity units available



*Intimidator™ 18XP*



**INTIMIDATOR™ 12XPC**

**Capacity:** 12" Diameter  
**Throat Opening:** 14-½" h x 17" w  
**Engine Options:** 49.4 - 89 HP

**Length:** 16'  
**Width:** 6' 8"  
**Height:** 8' 1"  
**Weight:** 4,900 lbs.



**INTIMIDATOR™ 12XP**

**Capacity:** 12" Diameter  
**Throat Opening:** 14-½" h x 17" w  
**Engine Options:** 49.4 - 130 HP

**Length:** 13' 5"  
**Width:** 6' 8"  
**Height:** 8' 1"  
**Weight:** 5,500 lbs.



## BANDIT INTIMIDATOR™ HAND-FED CHIPPERS

Bandit drum-style chippers are available with new gasoline and Tier 4 diesel engine options, improved tail light designs, standard reversing auto feed, and a slew of other enhancements making the best hand-fed chippers on the market even better.

From the 12" capacity Intimidator 12XP to the 21" capacity Intimidator 21XP, there's a Bandit drum-style chipper to conquer any job. Visit your Bandit authorized dealer to learn more about the new Intimidator drum chippers and other Bandit equipment.



### INTIMIDATOR™ 15XPC

<b>Capacity:</b>	15" Diameter	<b>Length:</b>	15'
<b>Throat Opening:</b>	17-1/4" h x 18-5/8" w	<b>Width:</b>	6' 11"
<b>Engine Options:</b>	49.4 - 142 HP	<b>Height:</b>	8'
		<b>Weight:</b>	7,198 lbs.



### INTIMIDATOR™ 15XP

<b>Capacity:</b>	15" Diameter	<b>Length:</b>	15' 7"
<b>Throat Opening:</b>	17-3/4" h x 18-1/2" w	<b>Width:</b>	6' 6"
<b>Engine Options:</b>	122.5 - 165 HP	<b>Height:</b>	8' 8"
		<b>Weight:</b>	8,000 lbs.



### INTIMIDATOR™ 18XP\*

<b>Capacity:</b>	18" Diameter	<b>Length:</b>	16'
<b>Throat Opening:</b>	20-1/2" h x 20-7/8" w	<b>Width:</b>	7' 5"
<b>Engine Options:</b>	122.5 - 213 HP	<b>Height:</b>	8' 8"
<i>*Ask about HD Feed Wheel Option</i>		<b>Weight:</b>	9,500 lbs.



### INTIMIDATOR™ 19XPC

<b>Capacity:</b>	19" Diameter	<b>Length:</b>	20' 3"
<b>Throat Opening:</b>	20-1/2" h x 20-7/8" w	<b>Width:</b>	7' 7"
<b>Engine Options:</b>	165 - 225 HP	<b>Height:</b>	8' 6"
		<b>Weight:</b>	10,900 lbs.



### INTIMIDATOR™ 21XP

<b>Capacity:</b>	21" Diameter	<b>Length:</b>	18' 5"
<b>Throat Opening:</b>	26-1/4" h x 24-1/2" w	<b>Width:</b>	8' 5"
<b>Engine Options:</b>	174 - 350 HP	<b>Height:</b>	10' 2"
		<b>Weight:</b>	15,000 lbs.



# SPECIALTY CHIPPERS

## UNIQUE CHIPPERS OFFER PORTABILITY AND SUPREME PERFORMANCE

Bandit offers a number of unique design options for nearly any Bandit chipper. We can configure your chipper with a chip box for convenient operation, or you can forego a feed system and get a conventional drum chipper. We offer a PTO option on select hand-fed chippers to cut your chipping costs while still delivering exceptional performance. Bandit PTO chippers can attach via a three-point hitch or easily hauled in a trailerized unit.



### 6" / 9" / 12" Diameter Capacity PTO-Drive Chippers



250 PTO-Drive Chipper

## PTO-DRIVE CHIPPERS

Available as either towable units or with a three-point hitch, PTO chippers provide exceptional convenience for customers that have PTO-capable tractors. Bandit's 6", 9" and 12" disc style chippers are available with either a 540 or 1000 RPM PTO drives. These PTO chippers provide a chipping attachment for tractors and other carriers with a PTO option.

### WHO USES A PTO CHIPPER?

Farms, golf courses, orchards, wooded resorts and large estates that are already maintained by tractors or other PTO-equipped machinery are ideally suited for PTO chippers. With chipping capacities from 6" to 12" available, Bandit PTO chippers can convert smaller trees, limbs and branches into chips that can be used on paths and as mulch.

### 4" Diameter Capacity Drum-Style Drop-Feed Chipper



## MODEL 490XP

<b>Capacity:</b>	4" Diameter	<b>Length:</b>	6' 6"
<b>Throat Opening:</b>	7" h x 15-1/2" w	<b>Width:</b>	2' 9"
<b>Engine Options:</b>	18 HP	<b>Height:</b>	4' 9"
		<b>Weight:</b>	500 lbs.

The smallest Bandit chipper is big on performance! It's easy-to-use drop-feed design accommodates material up to 4" in diameter, making it ideal for converting small prunings into chips for gardens. Power comes from an 18-horsepower gas engine turning a small drum, and it's available in numerous configurations including manual-push, towable, and as a PTO unit with a three-point hitch.

### WHO USES THE MODEL 490XP?

This is a perfect chipper for homeowners processing small diameter prunings and limbs. It's also a favorite for rental markets, and it's ideal for orchards as an alternative to simply piling or burning trimmings.



## SELF-PROPELLED TRACK CHIPPERS

Take your chipper to the trees with a self-propelled track chipper. Bandit track chippers feature industry-proven CAT undercarriages with either rubber or steel tracks for superior all-terrain performance. Wireless radio remotes are used to control all major track chipper functions. Track undercarriages can be added to any Bandit hand-fed chipper.

### WHO USES A TRACK CHIPPER?

For companies looking to expand beyond basic tree care, a track chipper is a must. Land clearing, right-of-way maintenance, forest thinning, trail and ditch maintenance and wildfire mitigation are just some of the uses for track chippers.



### Conventional Drum-Style Chippers



## MODEL 1690 DRUM CHIPPER

<b>Capacity:</b>	5" Diameter	<b>Length:</b>	13' 6"
<b>Throat Opening:</b>	10" h x 16" w	<b>Width:</b>	7' 6"
<b>Engine Options:</b>	74 or 89 HP	<b>Height:</b>	9'
		<b>Weight:</b>	5,000 lbs.

The simple, durable conventional drum chipper is still a cost-effective favorite for many companies. With no feed system, the Model 1690 is easy to use, simple to maintain, and extremely durable. It's available with a fixed discharge or optional side discharge, gas or diesel engines options, and convenience features like powered winches and a telescoping tongue.

### WHO USES THE 1690 CONVENTIONAL DRUM CHIPPER?

This classic design is most often used in utility line trimming operations.

### 12" - 18" Diameter Capacity Disc-Style Combo Box Units



Model 65XP CB Unit

## MODEL 65XP CB

<b>Capacity:</b>	6" Diameter	<b>Length:</b>	21'
<b>Throat Opening:</b>	6" h x 12" w	<b>Width:</b>	6' 7"
<b>Engine Options:</b>	25 - 49.4 HP	<b>Height:</b>	8' 8"
		<b>Weight:</b>	7,000 lbs.

Available for a 6" or 9" disc-style chipper, these combo units offer tremendous convenience by combining the chipper and a chip box on a single towable frame. Chippers are mounted on a seven-position, quick-release turntable for easy positioning. Chip boxes tilt for easy dumping when full.

## MODEL 90XP CB

<b>Capacity:</b>	9" Diameter	<b>Length:</b>	21'
<b>Throat Opening:</b>	9-1/2" h x 12" w	<b>Width:</b>	6' 7"
<b>Engine Options:</b>	49.4 HP	<b>Height:</b>	8' 8"
		<b>Weight:</b>	7,500 lbs.

### WHO USES A CHIPPER/CHIP BOX COMBO?

Tree services or operations primarily handling smaller trimming and tree work will find chipper / chip box combos to be extremely convenient. These units can eliminate the need for a dedicated chip truck and associated expenses such as fuel, insurance and license fees.



# AVAILABLE OPTIONS

THE BEST HAND-FED CHIPPERS IN THE INDUSTRY are made even better with a very broad range of equipment options and unique features. Bandit's success can be attributed to our close relationship with our customers. We listen to our customers needs and then build equipment to meet those needs.



## REMOTE CONTROLLED EXTENDING KESLA LOADER

The remote-controlled Kesla loader can extend to 21 feet and grab large bundles of limbs, large individual limbs, and even downed whole trees.



## WIRELESS REMOTE CONTROL

Control all major chipper functions with this easy-to-use remote.



## KNIFE SAVER

This hand-held sharpener is a unique and inexpensive device that easily touches up the chipper knives while still on the machine. Use it on the job to extend knife life.



## REVERSING AUTO FEED

Perhaps the most popular option for Bandit hand-fed chippers, the reversing auto feed monitors engine RPM and automatically reverses the feed system, backing material away from the chipping surface when RPM drops to a preset level. Once engine speed recovers, the feed system automatically reengages to continue processing material.



## HEAVY-DUTY WELDED INFEED TRAY

For professionals working with large limbs and trees and feeding the chipper with a loader or skid steer, swapping the folding infeed tray for a heavy-duty welded tray can give you the extra strength needed to chip those big takedowns.





## TRACK OPTION

A rugged track undercarriage can be added to hand-fed chippers. This feature allows it to travel over rough terrain not accessible by towable units.



## HYDRAULIC WINCH

This extremely popular option is easy-to-use, and gives ground crews a major assist in pulling big, heavy limbs and trees to the chipper for processing.



## HYDRAULIC BOTTOM BUMP BAR

Positioned at the bottom of the infeed tray, the hydraulic bump bar cuts power to the feed system when tripped. It can provide another point to disengage the feed system in the event of an emergency situation.



## GASOLINE OR DIESEL ENGINE OPTIONS

### FROM MOST MAJOR ENGINE MANUFACTURERS

Many Bandit hand-fed chippers can be equipped with either gasoline or diesel engines with varying horsepower ranges to suit specific needs. Engines from most major engine manufacturers are available, allowing customers to match their chipper to the rest of their fleet.



## HYDRAULIC LIFT CYLINDER

For extra bite from Bandit's Slide Box Feed System, the hydraulic lift cylinder can apply additional down pressure to crush forked limbs and big crotches. (Standard on the 18XP, 19XP and 21XP)



## HYDRAULIC TONGUE JACK

Especially popular with larger models, the hydraulic tongue jack takes the manual labor out of raising and lowering the tongue prior to towing.



## CHOOSE YOUR COLOR!

Bandit offers six standard colors at no additional charge, or for a nominal fee, choose any custom color to match your company, your personality, or to show support for a special cause.





[WWW.YOUTUBE.COM/BANDITCHIPPERS](http://WWW.YOUTUBE.COM/BANDITCHIPPERS) • [WWW.TWITTER.COM/BANDITCHIPPERS](http://WWW.TWITTER.COM/BANDITCHIPPERS) • [WWW.FACEBOOK.COM/BANDITINDUSTRIES](http://WWW.FACEBOOK.COM/BANDITINDUSTRIES)

All specifications, dimensions, standards and options are subject to change without notice. Dimensions and weights may vary, depending on options and engines selected. Bandit Industries, Inc. reserves the right to change designs, specifications and options without prior notice. All figures shown in technical data were current at the time of printing. However, these can change as a result of further product development and regional distribution differences. Please contact your authorized Bandit dealer or Bandit Industries, Inc. for more information. Made in the USA. Printed in the USA. © 2019 Bandit Industries, Inc. All Rights Reserved.

(1483-17\_0119E) 2500-HF